

GE Healthcare

LOGIQ 200 PRO Series

Digital Urological Ultrasound



A Superior, Cost-Effective Solution for Urological Ultrasound

The all-digital LOGIQ 200 PRO black-and-white ultrasound system features advanced imaging technology designed to make it ideal for a full range of urological applications.

This premium system delivers powerful urological imaging capabilities. And its 48-channel, wide-aperture architecture supports wide-band, multi-frequency imaging at faster frame rates, for optimized B-mode resolution.

An extremely compact system that's well suited for your urology practice, the LOGIQ 200 PRO equips you with:

- A wideband 7.0 MHz endorectal probe for superb prostate imaging
- Sophisticated computational software for precise volume calculations
- An easy-to-use needle-biopsy guide

Incredibly Easy Operation

The LOGIQ 200 PRO complements this powerful performance with a range of capabilities designed to speed procedures and enhance your productivity – including:

- Customized presets
- Live picture-in-picture lets you zoom in any region of interest without losing sight of the original image
- One button set-up for biopsies
- Large 12-inch monitor for high-resolution display

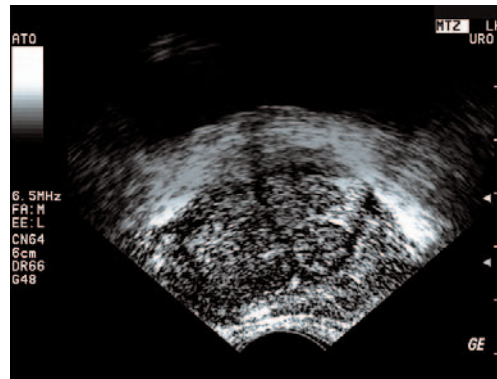
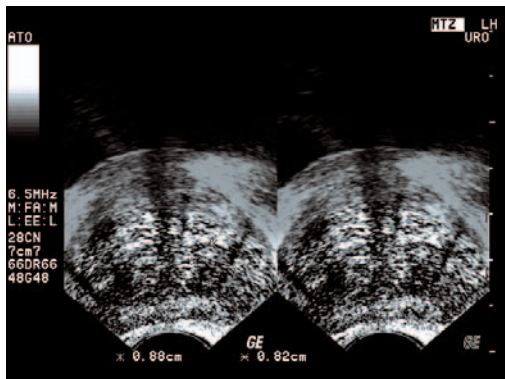
Complete Investment Security

To help safeguard your investment in advanced ultrasound technology, the LOGIQ 200 PRO comes complete with comprehensive GE support. For instance:

- **The GE Customer Answer Center** puts you in touch with registered Sonographer who's thoroughly trained in the use of LOGIQ 200 PRO
- **Worldclass GE service support** includes prompt on-site service, delivered by one of the industry's largest and best-trained teams of field engineers ...as well as ultra-fast diagnostics and repair via our pioneering InSite remote service network
- **Flexible GE financing and trade-in programs** make advanced technology affordable for virtually any practice

Learn More Today

For more information on the LOGIQ 200 PRO urology system, please contact your GE representative today or call 1-888-202-5528.



© 2005 General Electric Company – All rights reserved.
GE and GE Monogram are trademarks of General Electric Company.

GE Medical Systems Information Technologies, Inc.,
a General Electric company, going to market as GE Healthcare.

05-9747 03/05 Printed in USA